

Additional (Safety) Information

Advanced Emergency Braking

▶▶ The Advanced Emergency Braking System (AEBS) is a safety feature which became mandatory on nearly all **vehicles above 8 tonne** on the 1st November 2015.



AEBS uses a radar sensor, mounted behind the front grille - to recognise stationary vehicles, or slower moving vehicles which are travelling in the same direction as your unit.

In the case of a potential imminent collision **AEBS will first alert the driver of a possible collision** by an audible & visual warning – prompting the driver to take evasive action. If there is no evasive action then there will be a short application of the brakes to alert the driver. If there is still no action from the driver then the warnings will remain active **and the brakes will be applied.**

AEBS should not be switched off unless driving 'off road' or when being towed. A full explanation can be found in the driver's handbook.



NOTE: AEBS does not absolve the driver from their responsibilities. It is the driver who is and remains at all times responsible for the safe and correct operation of the truck.



Lane Departure Warning

▶▶ The Lane Departure Warning System monitors the truck's position on the road and uses an audible warning to alert the driver if the truck unintentionally deviates from its lane.

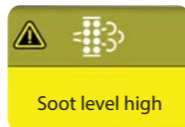


This engages automatically when the ignition is switched on, and is an ideal system on long distance journeys, but you may want to switch it off if travelling on narrow or winding roads by pressing the switch once.

If the warning indicator is visible in the dash then either the LDWS cannot detect any lines or has been disabled.

Regeneration

▶▶ Regeneration is a **cleaning process** which removes the soot accumulated in the Diesel Particulate Filter (DPF). As long as the DPF Regeneration switch is not in the OFF position when the vehicle is being driven **the vehicle will manage the soot levels automatically.**



So ensure the DPF Regeneration Switch is ALWAYS in the "normal driving" position when driving.

When regeneration is taking place there is an increase in the temperature of the exhaust. **If you see the High Exhaust System Temperature (HEST) warning symbol** in the body mapping area of the instrument panel this is a prompt to take care when parking up.

If the vehicle does need to carry out a Stationary Forced Regeneration there will be a warning on the Driver's Information Panel (DIP); simply follow the prompts.

A complete explanation can be found in the driver's handbook.



CF QUICK START GUIDE

Useful Controls & Switches

The Keyfob

▶▶ **Press the unlock button once** to unlock the driver door, and then again to unlock the passenger door. Unless one of the doors is opened within 30 seconds the vehicle will self lock.



Holding down the lock button **for 2 seconds** will also close any opened windows.

The Keyfob can also be used to carry out a full lighting systems check: **Press and hold the large button for 2 seconds** to check all lights are working. To cancel the check press again for 2 seconds.

Steering Column Adjustment

▶▶ To attain the perfect position of the steering wheel; **press the column switch up once** to release. The steering wheel can then be adjusted for reach and rake. Press again to lock. If you do not lock back in **within 10 seconds** the column will self lock.



Cab Auxiliary Heater - Timer & REST Function (optional)

▶▶ The Auxiliary Cab Heater operation is incorporated in the climate control and **utilises the coolant and heater matrix** to warm the cab.

To operate the timer: Key on to the **first position and press switch 1** then turn the rotary switch to on and enter using switch 2.

A day will be displayed in the screen, **turn the rotary switch** to select the day you want the heater to start. Once the correct day is selected enter by pressing switch 2. **Repeat process to select** the hour, minutes and then temperature.

The timer is now set. Turn off the key. The heater will shut down **when the ignition is turned on.**



When REST appears in the screen and with the engine off you can select using switch 2 **to give up to 45 minutes** of heat from the engine.

Intermittent Wipe

▶▶ The **intermittent wipe** can be adjusted to suit the severity of rainfall or road spray.

To programme the interval simply switch to the intermittent position and before it completes 1 cycle switch off. **When the windscreen needs to be cleared** - simply switch back to intermittent to set the precise frequency.



Supplementary Lighting

▶▶ There are a few specialist switches to control lighting.



Black Panel Mode: switches the master display OFF and dims instrument panel illumination to reduce reflection and glare during night time driving

Interior Lights off: Turns off all in-cab lighting



Rotary **Interior Atmosphere** switch:

OFF

NIGHT DRIVE: Stimulate driving performance

RELAX: To create a relaxed atmosphere

FLOOD: Full lighting for working in the cab

NOTE: Night Drive & Relax mode are dimmable using +/-

Hill Start Aid (Auto Only)

▶▶ **The Hill Start Aid** prevents any roll back or roll forward when pulling away by holding on the service brakes **after the brake pedal is released** until the drive is taken up by applying the throttle.



NOTE: Hill start aid will only **hold the vehicle for 2 seconds** after the footbrake is released

Off Road Mode (Auto Only)

▶▶ Off Road Mode is available on double drive vehicles and changes the behaviour of the engine and gearbox **to suit the off - road environment**



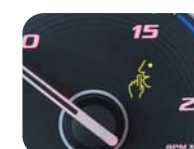
Off Road Mode provides **progressive clutch control, faster shifting, and higher revs** for when you need it most.

Silent Mode

▶▶ Silent Mode is a feature which should be **used for night-time deliveries.** When enabled the engine software changes: limiting vehicle speed, engine torque and revs.



A tell tale in the rev counter displays when in silent mode and **a warning will show in the DIP** if Silent Mode is active on key on.



NOTE: When silent mode is ON the reverse warning alarm is also silenced

Contact

There is much more information in your driver's handbook so do take time to read it, additionally you can download the MyDAF app for your smart phone or tablet, or go to www.dafblog.co.uk where you can find video clips to help you get the best out of you new DAF truck.

We are here to help so if you have any further questions you can talk to your local DAF Dealer or contact the DAF Driver Academy on 01844 261111.



VISIT THE DAFBLOG FOR DAF NEWS, DRIVER SUPPORT & LOADS OF OTHER USEFUL INFORMATION



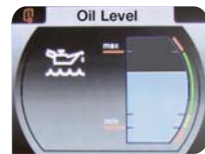
CF/2018/TM/3000k

Driver Information Panel (DIP)



Oil Level Check

The **Oil Level** can be checked under 'Vehicle Info'. For a real time reading this should be carried out when the engine has not been recently started.



If this is not possible then simply wait for 2 seconds where the most recent measurement and the mileage when this was accurately recorded will be displayed in the DIP.

NOTE: On the PX-7 Engine the oil must be checked using the dipstick under the front grille

Soot Filter Check

The level of soot in the filter can be checked **at any time** under 'Vehicle Info'. This screen will also show the status of the DPF Regeneration switch.



NOTE: The DPF Regeneration switch should be in the "Normal Driving" position when the vehicle is being driven so **it's worth including this in your daily vehicle checks**

Driver Performance Assistant

The **Driver Performance Assistant (DPA)** under 'Driving Support' is an interactive system to help achieve your most efficient driving style.



It looks at; anticipation, efficient braking and correct use of the various speed control systems giving you an overall score at the end of your day, along with **providing gear shift advice and fuel saving tips.**

Driving Time

Under the Main Menu 'Driving Support' is **Drive Time.**



This displays: Your current activity, remaining **drive time**, daily total and remaining **rest time**, helping to you manage your driving hours and working time.

Fuel Saving

EcoMode

EcoMode is a fuel saving feature which defaults to on. It operates by way of keeping the engine revs **in the optimum torque band** for smooth acceleration and fuel efficient driving.



It is possible to temporarily disable EcoMode by **pressing the button on the end of the right hand stalk.** By pressing once, the acceleration and shifting strategy changes to allow the engine to operate at a higher rpm increasing vehicle performance. **Ecomode is then disabled for a minimum of 60 seconds** (or until no longer required) which also allows manual shifting of the gearbox.

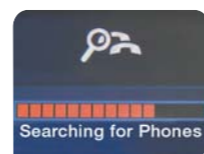
NOTE: The cruising engine speed of your vehicle is low (900 rpm) so **don't be tempted to change down** - drive by the rev counter and not your ear

Using the rotary Menu Control Switch; Push once to bring up the menu and then rotate to select and then push to enter the menu.

Press the back arrow once to come **up one level** or press and hold for 2 seconds to **return to the home screen.**

Truck Phone

The DAF TruckPhone provides safe hands-free communication from behind the wheel using either **Bluetooth with your phone,** or through a **dedicated SIM card** slot for a fully integrated truck phone.



To use the SIM card option a programmed SIM card must be inserted into the DAF TruckPhone and depending on your model, the unit location will be shown in your handbook.

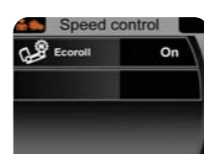
Up to 10 mobile phones can be paired, of which two can be connected simultaneously. Bluetooth connections can be made using the Menu Control Switch.

When connected the phones can be **operated from the steering wheel** to display numbers/names, dial and view SMS on the **Driver Information Panel.**

A USB charging point is provided at the centre console of the dashboard **to charge your phone or device.**

EcoRoll

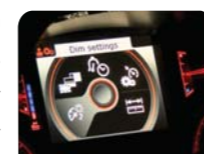
EcoRoll is standard on vehicles **with the automated gearbox** and allows 'free' rolling when driving on cruise control and on the Variable Speed Limiter. When at the set speed **on slight descents** the gearbox shifts to neutral .



EcoRoll is defaulted to on, but you can disable this function under **Settings/Speed Control**

Night Mode In Reverse

Extinguishes all dash illumination **when reverse is selected** eliminating reflections from the side window - giving a clearer view of your mirrors. This feature is programmable under Settings/Dim Settings.



NOTE: If you have low level cornering lights they will both become active **giving you additional visibility** when manoeuvring

MX Engine Brake

You can **make your life easier** whilst saving brake wear and fuel if your vehicle has the 3 stage MX engine brake Using this allows you to utilise **the precise amount of braking power** you need.



The power of the MX engine brake can be **further enhanced** by downshifting gears to keep the engine speed in the **blue-band of the rev counter.**

Remember to switch OFF after use to maximise coasting when throttling off. The Instrument Panel will also remind you when the MX Engine Brake is active.

NOTE: Don't worry about over revving as the inhibitor will not allow a downshift by you if it is not safe for the truck to do so

Speed Control Features

Cruise Control (RH Steering Wheel Switches)

To activate the Cruise Control Function; bring up your speed **then press 'SET'** when at your desired speed.



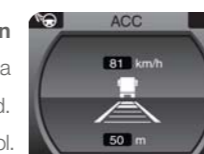
To adjust the speed setting **press once for 1kph or hold for 5kph increments,** and to cancel Cruise Control, press "OFF".

To resume press 'RES' **and the vehicle will economically return** to your last set speed (Mild Cruise Resume).

NOTE: Cruise Control will **not disengage** when the brakes are applied above the set speed. And the **CC setting will remain** after key off

Adaptive Cruise Control

Adaptive Cruise Control (ACC) **is an addition to Cruise Control** that keeps your vehicle at a safe and comfortable distance from the vehicle ahead. ACC is defaulted to on when engaging Cruise Control.



Downhill Speed Control

Downhill Speed Control is automatically engaged when Cruise Control is set. **DSC maintains your set speed during descents by utilising the MX Engine Brake or Intarder.**



NOTE: When CC disengages due to brake application DSC will remain active and a **'retarder' icon will show** in the lower part of your speedometer

EcoRoll (Auto Only)

When on a slight descent in Cruise Control **and certain conditions are met** the gearbox will select neutral. When the speed drops back down to the set speed the appropriate gear will engage and power will be applied.



Alternatively if the speed reaches the DSC setting the gearbox will engage to hold you at that speed and if necessary the MX Brake will be applied.

Speed Control Functions

Speed Control Switches

The Right Hand steering wheel switches **set the speed control features above** and can be set PRIOR to driving.

To input your preferred settings; **press the Speed Control Menu Switch (2)** to bring up the Menu (see on right) where ACC is highlighted. **Using the LIM Function Switch (1)** adjust up or down.

Toggle to the DSC by using the Menu Switch (2) and again **scroll with the LIM Function Switch.**

Toggle to the PCC using the Menu Switch **and adjust using** the LIM Function Switch.



NOTE: All settings will revert to default on key off

Predictive Cruise Control (Optional)

Predictive Cruise Control (PCC) uses GPS technology and detailed mapping to pinpoint the **exact location of the truck in relation to the upcoming terrain.** PCC is defaulted to on when you engage Cruise Control.

PCC adapts the vehicle speed and gear shifting strategy to navigate this terrain **in the most fuel efficient manner.**



NOTE: PCC will utilise the EcoRoll feature to its maximum

Variable Speed Limiter

The **Personal Road Speed Limiter** gives you the provision to set your maximum speed (above 20mph) when travelling through town or speed restricted areas.



To engage this feature simply **press** at the required speed and you will not be able to exceed the speed **during normal driving.**

Additionally **EcoRoll will engage** between this set speed and a preset 2kph over-run where the engine brake will engage, **so a good practice when not using Cruise Control is to use the Limiter** which will maximise the EcoRoll function.

NOTE: You can over-ride this **in any emergency situation** by pushing the throttle pedal hard down to the floor **or by pressing the 'OFF' switch**

Speed Control Menu

The Speed Control Menu is displayed in the DIP when the Menu Switch is pressed either prior to or during the drive.

ACC: Can be set between **5 and off.** 5 being the maximum distance between you and the vehicle in front.



DSC: Can be set between **15 and 3.** 15 being the maximum speed allowed above the Cruise Set Speed. The higher this setting the more EcoRoll will engage - **but be aware of speed limits!**



PCC: Can be set between **10 and off.** 10 being the maximum speed drop allowed prior to cresting the hill.



NOTE: When adjusting use the green ticks as a reference for 'fuel or performance'